

SOHO-t

born in italy

PLANET COLLECTION
FALL / WINTER 2024-25

La nuova Collezione Soho-t Autunno-Inverno 2024/25 si muove nello spazio e, casualmente attratta da alcuni pianeti, vi ruota intorno per assorbirne i più remoti significati.

Gravita intorno a Giove, il più grande, sinonimo di crescita ed espansione, come accade ai volumi dei capi a lui ispirati. Pratici, realizzati con tessuti performanti, ideali per viaggiare.

Diventa un anello di Saturno, il sovrano del tempo, saggio, logico e concentrato. Si trasforma in capi ideali sempre, slegati da momenti e geografie.

Gira intorno a Marte, pianeta guerriero e riscopre il guardaroba maschile, ne usa i tessuti e lo ridisegna a suo piacere. Volumi snelli e scattanti.

Dopo il vagabondaggio nello spazio, la collezione si fa Luna, torna al suo luogo naturale, amica della Terra, ne è l'unico satellite, attratta e respinta, in perfetto equilibrio. I tessuti diventano morbidi, il suo candore li tinge di bianco, la sua superficie ed i suoi crateri diventano delle stampe, i volumi sono contenuti, naturali. Il viaggio è concluso, riprenderà dopo un breve intervallo.

The new Soho-t Fall-Winter 2024/25 Collection moves through space and, coincidentally attracted to certain planets, revolves around them to absorb their most remote meanings.

It gravitates around Jupiter, the largest planet, synonymous with growth and expansion, and the same thing happens to the volumes of the garments inspired by it. Practical, made with performing fabrics, ideal for traveling.

It becomes a ring of Saturn, the ruler of time; wise, logical and focused. It transforms into ideal garments, untethered from moments and geographies.

It circles Mars, warrior planet and rediscovers the male wardrobe, uses its fabrics and redesigns it to his liking. Streamlined and quick volumes.

After wandering in space, the collection becomes Moon, goes back to its natural place, Earth's friend, its only satellite, attracted and repelled, in perfect balance. The fabrics become soft, its whiteness tinges them white, its surface and craters become prints, the volumes are contained, natural. The journey is over, it will resume after a short interval.

Pianeta è un termine che deriva dal greco e significa "stella errante".

Planet is a term that derives from Greek and means "wandering star".

PLANET COLLECTION
FALL / WINTER 2024-25



MOD. A09
ART. J150



MOD. CA01
ART. J200



MOD. A06
ART. J150



MOD. A06
ART. J150



MOD. F01
ART. J150
MOD. G06
ART. J150



MOD. F11
ART. J150



MOD. CA04
ART. J200



MOD. CA04
ART. J200



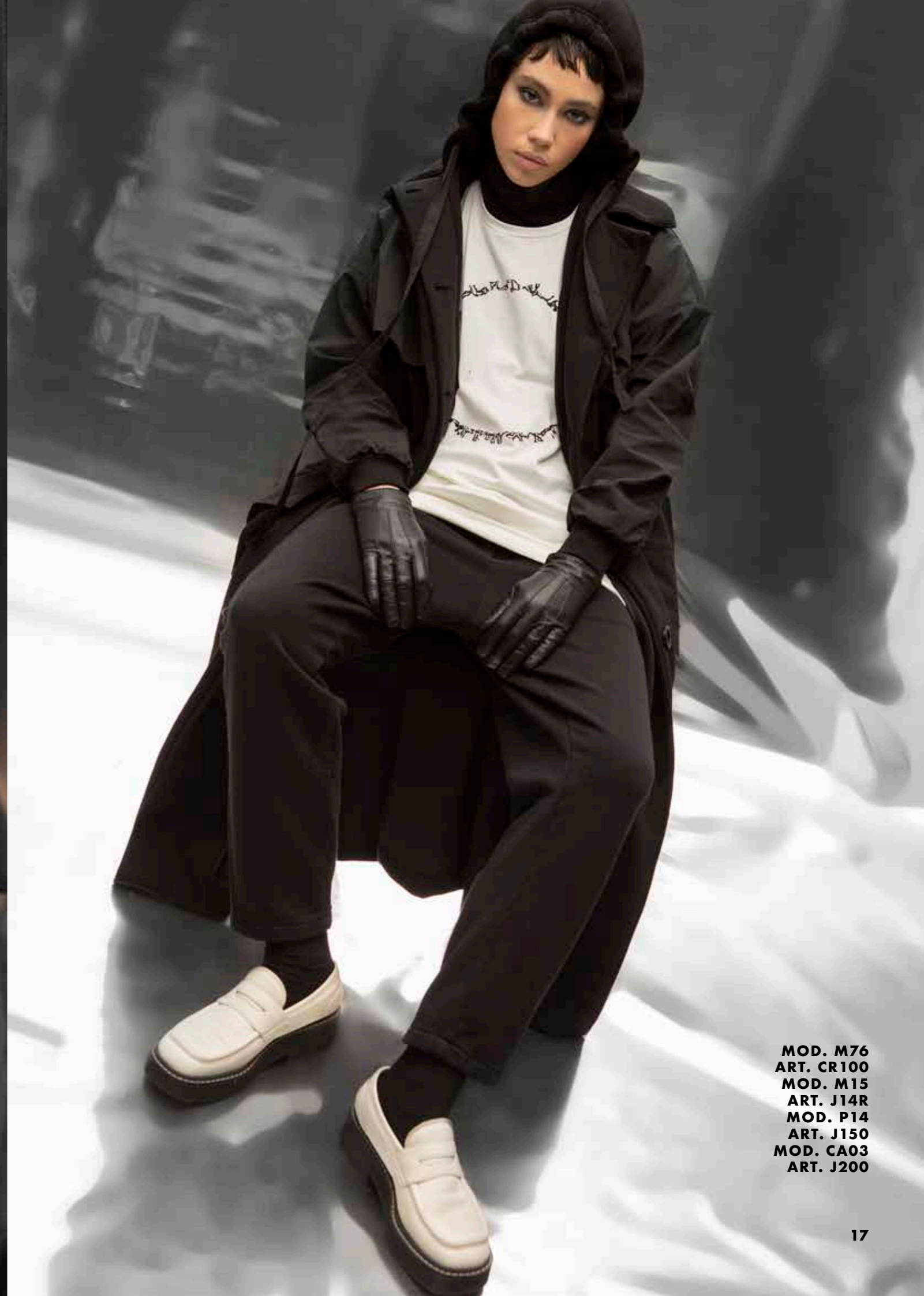
MOD. M09
ART. MLR
MOD. P78
ART. PK100



MOD. M09
ART. MLR
MOD. P02
ART. PK100



MOD. M76
ART. CR100
MOD. M15
ART. J14R
MOD. CA03
ART. J200



MOD. M76
ART. CR100
MOD. M15
ART. J14R
MOD. P14
ART. J150
MOD. CA03
ART. J200



MOD. F10
ART. J2R



MOD. M76
ART. CR100
MOD. M15
ART. J14R
MOD. P14
ART. J150



MOD. GL05
ART. J150



MOD. GL05
ART. J150
MOD. G06
ART. J150



MOD. M10
ART. MLS



MOD. M10
ART. MLS
MOD. G02
ART. BC100



MOD. A10
ART. CR100



MOD. F01
ART. CR100
MOD. G10
ART. CR100



MOD. M19
ART. CR100
MOD. GL02
ART. BC100
MOD. P01
ART. BC100



MOD. M10
ART. CR100
MOD. P05
ART. J150



MOD. M10
ART. MLS
MOD. CA06
ART. BC100
MOD. G02
ART. BC100



MOD. CA11
ART. CD100

JUPITER

*Crescita ed espansione dei volumi.
Tessuti performanti, ideali per viaggiare.*

*Growth, bigger volumes,
high-performance fabrics ideal for traveling*



**MOD. F05
ART. J150
MOD. P09
ART. J150**



MOD. A05
ART. FL100



MOD. M05
ART. ML100
MOD. G08
ART. FL100



MOD. GC04
ART. FL100
MOD. P03
ART. FL100



MOD. M07
ART. SS100
MOD. GC03
ART. FL100
MOD. P10
ART. FL100



MOD. M17
ART. CR100
MOD. F12
ART. PK100
MOD. G11
ART. FL100



MOD. GC06
ART. J200



MOD. M82
ART. RM100
MOD. G12
ART. FL100



MOD. A01
ART. RM100
MOD. M01
ART. RM100
MOD. P10
ART. PK100



MOD. M19
ART. RP100
MOD. M04
ART. RP100
MOD. P09
ART. FL100



MOD. M16
ART. RP100
MOD. P10
ART. PK100



MOD. M01
ART. RM100
MOD. P10
ART. PK100



MOD. M03
ART. RP100



MOD. M16
ART. MLR



MOD. M76
ART. J145



MOD. CA05



MOD. M15
ART. S55
MOD. P12
ART. SS100

MARS

*Carattere, guardaroba e tessuti maschili.
Volumi snelli.*

Strong nature, masculine fabrics and clothes, slim fit.



**MOD. CA09
ART. CD100**



MOD. MG02
MOD. G06
ART. GS100



MOD. M76
ART. CR100
MOD. GC29
ART. GS100
MOD. P12
ART. GS100



MOD. MG03
MOD. G09
ART. GS100



MOD. M76
ART. J14R
MOD. GC31
ART. GS100
MOD. P07
ART. GS100



MOD. F01
ART. ML100
MOD. P12
ART. GS100



MOD. M76
ART. J14R
MOD. P07
ART. GS100



MOD. MG01
MOD. P05
ART. GS100



MOD. M76
ART. CR100
MOD. GC31
ART. GS100
MOD. P07
ART. GS100



MOD. M09
ART. MLR



MOD. F06
ART. J2S
MOD. P04
ART. PK100



MOD. F06
ART. J25
MOD. G03
ART. DR100



MOD. M76
ART. CR5
MOD. GC02
ART. ML100
MOD. G10
ART. CR100



MOD. A10
ART. ML100



MOD. M76
ART. CR100
MOD. C02
ART. TCS
MOD. G07
ART. PK100



MOD. M76
ART. J14R



MOD. M76
ART. J14R
MOD. G05
ART. PK100



MOD. M66
ART. J145
MOD. G04
ART. PK100



MOD. C03
ART. TCS

MOON

*Il suo candore tinge di latte i tessuti.
La sua superficie ed i suoi tessuti diventano stampe.*

*Its whiteness make the fabrics like white milk,
its surface and its craters become decorative prints.*



**MOD. A11
ART. SS100**



MOD. M17
ART. J14R
MOD. GC37
ART. PK100



MOD. M76
ART. CRS
MOD. F12
ART. PK100
MOD. G01
ART. PK100



MOD. GC01
ART. PK100



MOD. GC01
ART. PK100
MOD. P78
ART. PK100



MOD. M76
ART. CR100
MOD. F12
ART. PK100
MOD. G07
ART. PK100



MOD. F03
ART. ML100
MOD. G10
ART. CR100



MOD. M19
ART. RP100
MOD. P08
ART. ML100



MOD. M13
ART. RP100
MOD. P08
ART. RM100
MOD. M90
ART. RP100
MOD. G10
ART. RM100



MOD. M17
ART. RM100



MOD. M18
ART. B100
MOD. P11
ART. B100



MOD. M05
ART. B100
MOD. P14
ART. B100



MOD. M02
ART. RM100



MOD. A11
ART. NY100



MOD. A11
ART. NY100



MOD. M06
ART. B100
MOD. P14
ART. B100



MOD. M76
ART. CRS
MOD. G06
ART. ML100



MOD. F01
ART. ML100
MOD. G06
ARTI, ML100



MOD. A10
ART. B100



MOD. F08
ART. B100
MOD. P11
ART. B100



MOD. M09
ART. ML100



MOD. GC37
ART. PK100
MOD. P10
ART. PK100



MOD. A03
ART. PK100



MOD. M20
ART. B100
MOD. G11
ART. B100



MOD. A09
ART. B100



MOD. GC05
ART. DR100
MOD. P04
ART. DR100



MOD. GC05
ART. DR100
MOD. P04
ART. DR100



MOD. M76
ART. CR100
MOD. GC37
ART. DR100
MOD. P12
ART. DR100



MOD. M76
ART. CR100
MOD. GC37
ART. DR100
MOD. P12
ART. DR100



MOD. F05
ART. B100
MOD. G12
ART. DR100



MOD. M76
ART. J1460
MOD. C01
ART. DR100
MOD. G12
ART. DR100

SATURN

*Saggio, logico, concentrato.
Capi ideali sempre, slegati da momenti e geografie.*

*Ruler of time, wise, logical and focused.
Always ideal clothes, timeless and landless.*



**MOD. M19
ART. PZ100
MOD. G01
ART. SS100**



MOD. M19
ART. PZ100
MOD. G08
ART. SS100



MOD. M19
ART. PZ100
MOD. G10
ART. PZ100



MOD. A01
ART. PZ100



MOD. A01
ART. PZ100



MOD. GC06
ART. PZ100
MOD. M66
ART. PZ100
MOD. P02
ART. FL100



MOD. GC31
ART. PZ100
MOD. P13
ART. PZ100



MOD. F10
ART. J2R
MOD. G06
ART. IS100



MOD. GC31
ART. IS100
MOD. P04
ART. IS100



MOD. M76
ART. CR100
MOD. CA06
ART. KW100
MOD. G06
ART. KW100



MOD. GC37
ART. KW100
MOD. P02
ART. KW100



MOD. CA06
ART. KW100
MOD. G06
ART. KW100
MOD. GC27
ART. KW100
MOD. P02
ART. KW100
MOD. M76
ART. CR100

Credits

Photographer: CUBA Studio
Make-up & Hair style: Andreea Natalia Bucur - @Andreea_mua
Fashion designer: Claudia Zanon
Fashion Coordinator: Francesco Fino

Revolution Company Srl

www.soho-t.it
info@soho-t.it

IG: soho_t_italy
FB: sohotitaly